

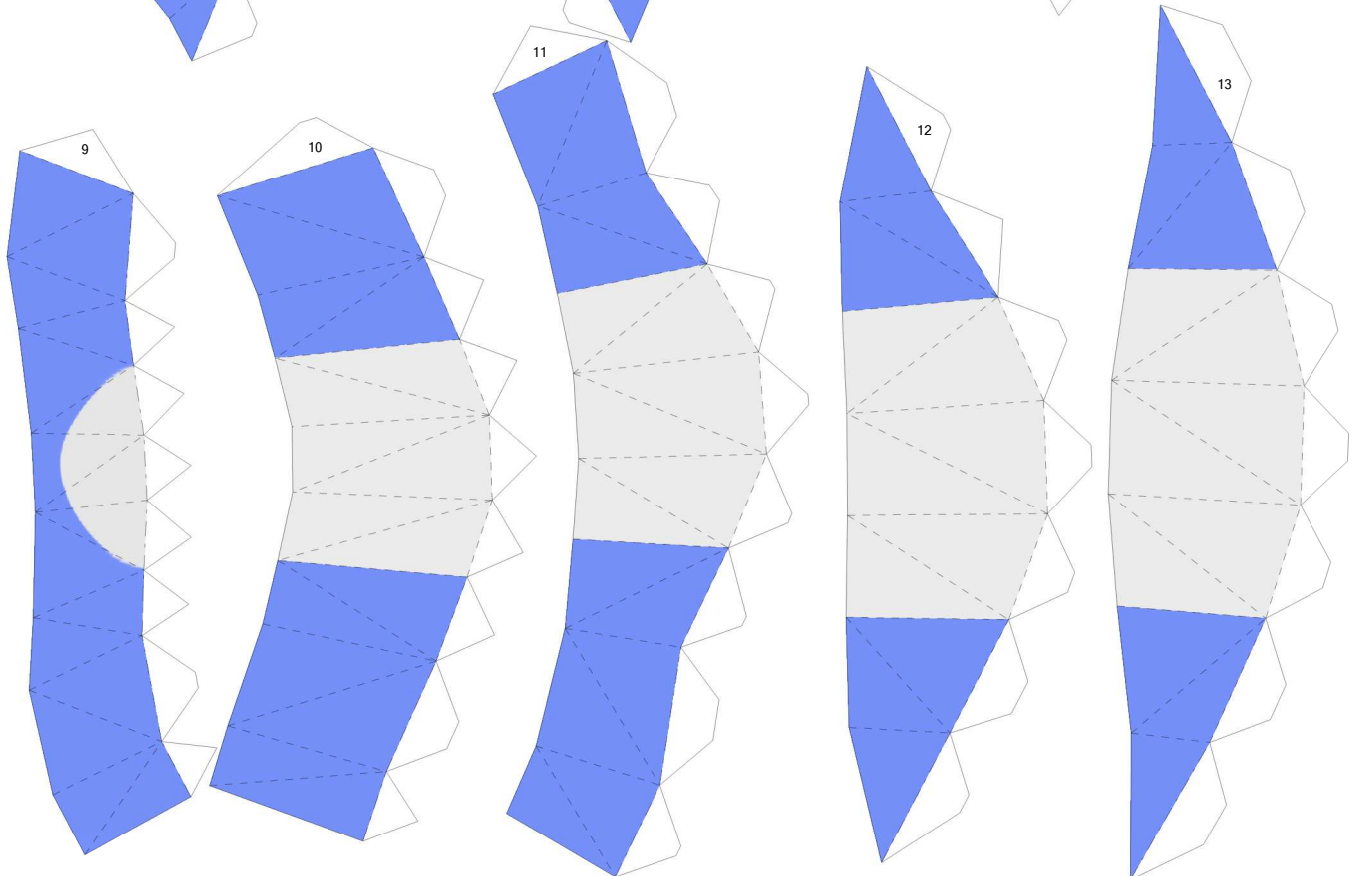
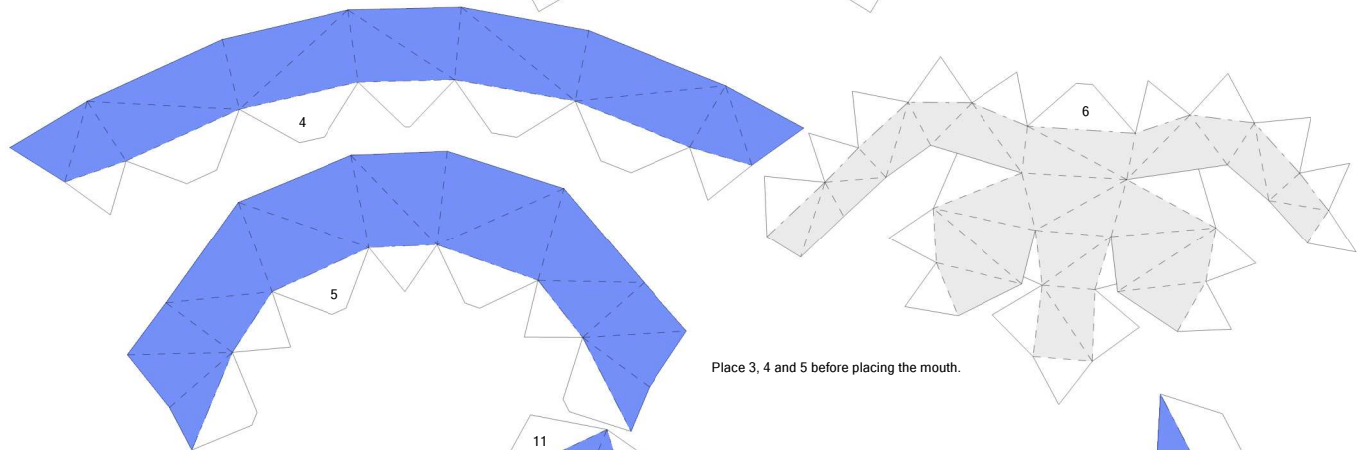
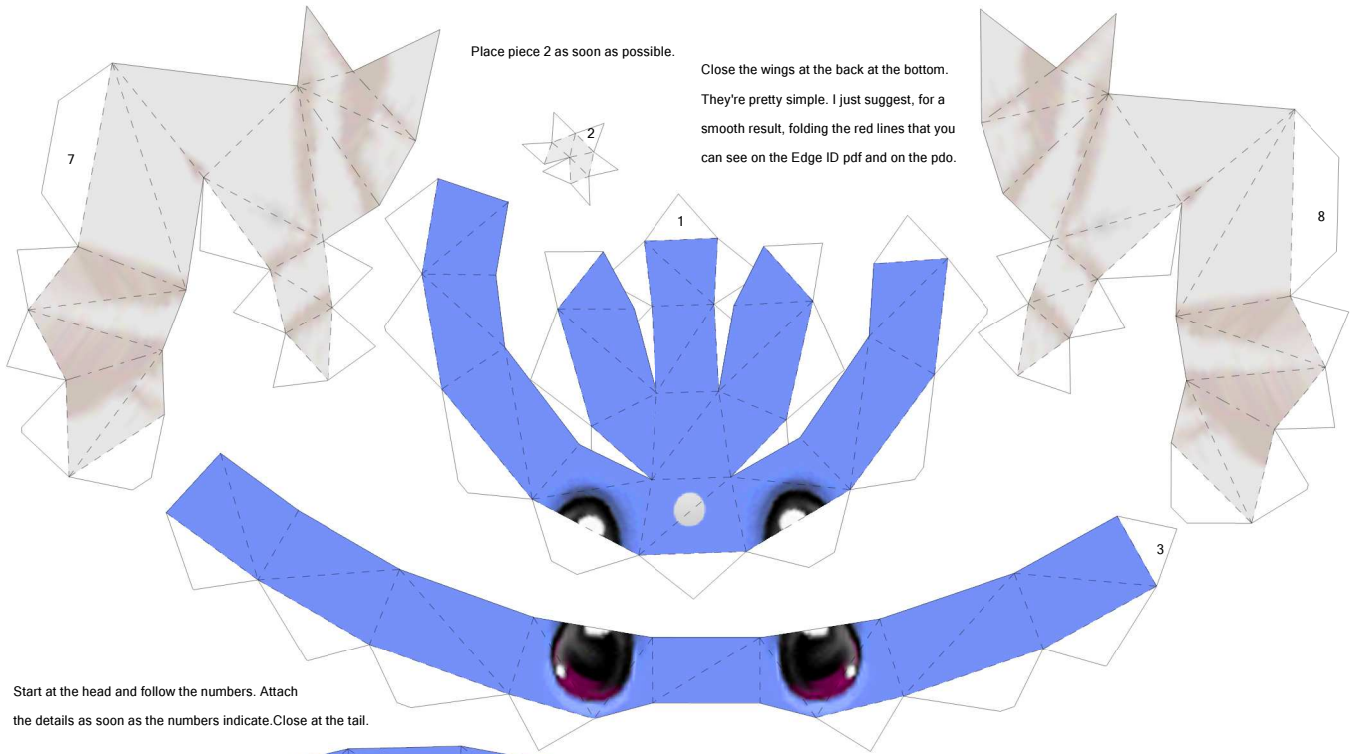


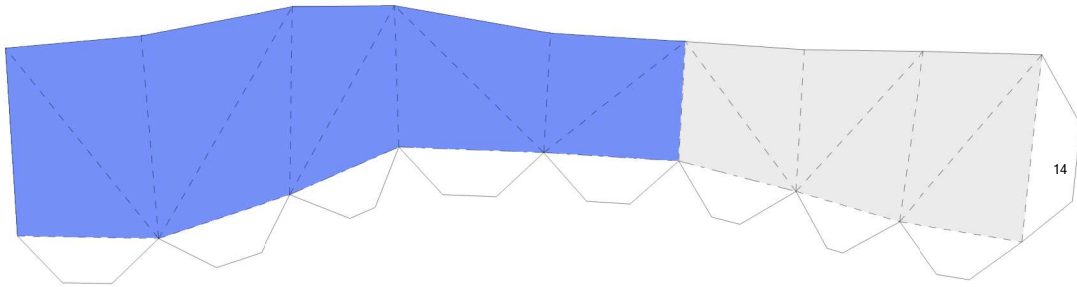
Dratini V2

By Brandon

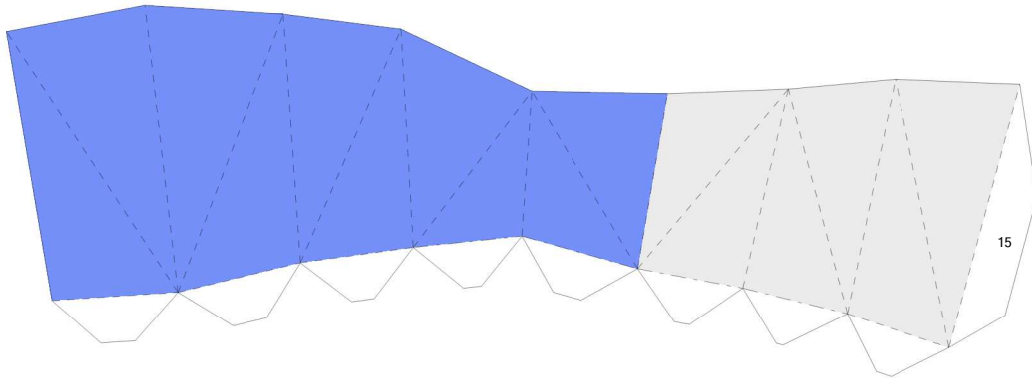
Build by LuIS



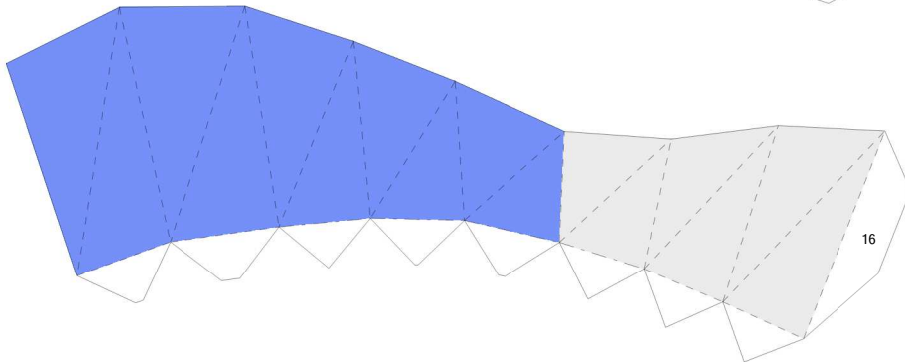




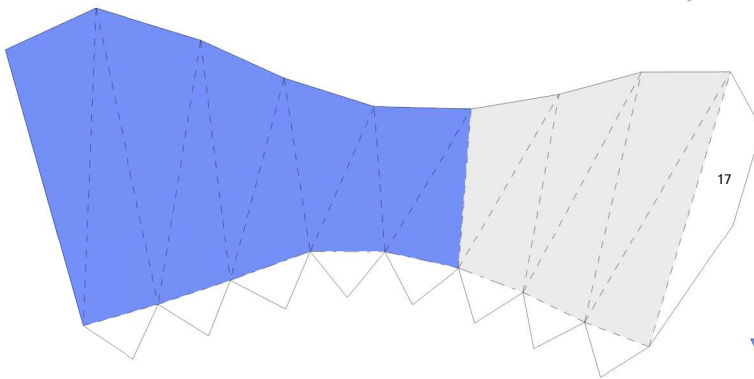
14



15

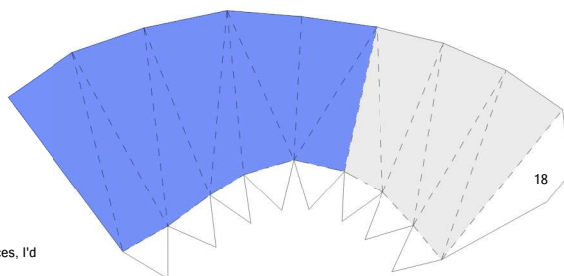


16

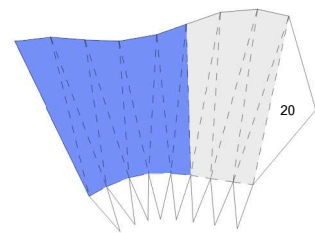


17

The model don't stand on it's own. You'll need some weight. You can either place some coins at the bottom (piece 14 or 15) or place something like corn or rice before closing it. If you're using them add it before closing, carefully until it stands and close right after. But if you're using coins, place them as soon as possible.

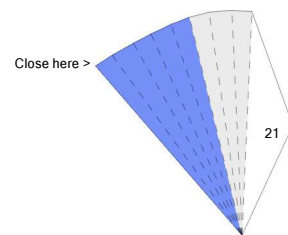


18

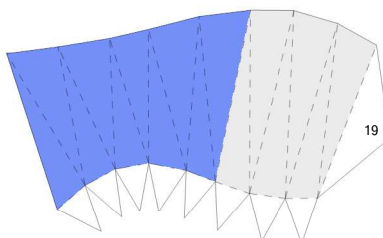


20

For a smooth result with the round pieces, I'd suggest rounding the pieces with a pencil, just place the bigger tab of the piece on a pencil and round the rest of the piece around it.



21



19